



Arts and SEL: A musical crosswalk

Anna Backstrom - Deer Valley Unified SD

David Simmons - UBU Project

Nathan Johnston - Chandler Unified SD

Who are we?

Anna Backstrom

David Simmons

Nathan Johnston



Who are YOU?



What is SEL?

ADE SEL Competencies and Equity Elaborations (June 17, 2021)

- ✗ Self-awareness: Identity development
- ✗ Self-management: Agency and Efficacy
- ✗ Social awareness: Belonging and Engagement
- ✗ Relationship skills
- ✗ Responsible Decision Making: Belonging and Engagement



What are the Artistic Processes?

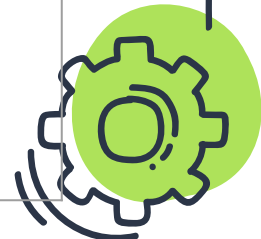
National and AZ State Arts Standards based on:

- X** Create
- X** Perform
- X** Respond
- X** Connect



Where is the intersection? - CREATE

	Self-awareness (Identity development)	Self-management (Agency and Efficacy)	Social awareness (Belonging and Engagement)	Relationship skills	Responsible Decision Making (Belonging and Engagement)
CREATE	SUMMARY: Creating or modifying original work that represents internalized identities and perspectives through sound expressions.	SUMMARY: Creating or modifying original work that generates emotional and behavioral balance within diverse learning environments, through sound expressions.	SUMMARY: Creating or modifying original work that fosters empathy for others' identities, experiences, and perspectives within local and global communities, through sound expressions.	SUMMARY: Creating or modifying original work that fosters diverse connections and partnerships with others through sound expressions.	SUMMARY: Creating or modifying original work that demonstrates solution driven opportunities and collaborations through sound expressions.



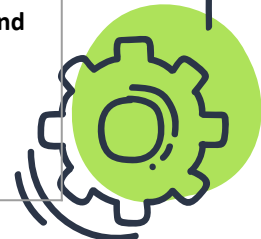
Where is the intersection? - PERFORM

	Self-awareness (Identity development)	Self-management (Agency and Efficacy)	Social awareness (Belonging and Engagement)	Relationship skills	Responsible Decision Making (Belonging and Engagement)
PERFORM	SUMMARY: Performing works that represent internalized identities and perspectives through sound expressions.	SUMMARY: Performing works that generate emotional and behavioral balance within diverse learning environments, through sound expressions.	SUMMARY: Performing works that foster empathy for others' identities, experiences, and perspectives within local and global communities, through sound expressions.	SUMMARY: Performing works that foster diverse connections and partnerships with others through sound expressions.	SUMMARY: Performing works that demonstrate solution driven opportunities and collaborations through sound expressions.



Where is the intersection? - RESPOND

	Self-awareness (Identity development)	Self-management (Agency and Efficacy)	Social awareness (Belonging and Engagement)	Relationship skills	Responsible Decision Making (Belonging and Engagement)
RESPOND	SUMMARY: Contextualizing concrete and implied characteristics of sound expressions that represent internalized identities and perspectives.	SUMMARY: Contextualizing concrete and implied characteristics of sound expressions that generate emotional and behavioral balance within diverse learning environments.	SUMMARY: Contextualizing concrete and implied characteristics of sound expressions that foster empathy for others' identities, experiences, and perspectives within local and global communities.	SUMMARY: Contextualizing concrete and implied characteristics of sound expressions that foster diverse connections and partnerships with others.	SUMMARY: Contextualizing concrete and implied characteristics of sound expressions that demonstrate solution driven opportunities and collaborations.



Where is the intersection? - CONNECT

	Self-awareness (Identity development)	Self-management (Agency and Efficacy)	Social awareness (Belonging and Engagement)	Relationship skills	Responsible Decision Making (Belonging and Engagement)
CONNECT	SUMMARY: Contextualizing concrete and implied artistic decisions that represent internalized identities and perspectives of various sound expressions.	SUMMARY: Contextualizing concrete and implied artistic decisions that generate emotional and behavioral balance within diverse learning environments through sound expressions.	SUMMARY: Contextualizing concrete and implied artistic decisions that foster empathy for others' identities, experiences, and perspectives within local and global communities, through various sound expressions.	SUMMARY: Contextualizing concrete and implied artistic decisions that foster diverse connections and partnerships with others, through various sound expressions.	SUMMARY: Contextualizing concrete and implied artistic decisions that demonstrate solution driven opportunities and collaborations through various sound expressions.



“Songs are stories that you sing”?

SEL Competencies:

- Social Awareness and Relationship Skills

Artistic Process:

- Perform, Respond, and Connect

Reflections:

- Cross-Curricular?
- Cross-Cultural?



How it comes together

ADE SEL-ARTS Crossing Guards (Music): State SEL
Competencies and
Artistic Processes Matrix

Sample: Perform



SHARING

What successes have you had with SEL in your classroom?

What resources have been most valuable to you?

What gaps or challenges still exist - in both understanding and/or practice?

What are your next steps?



Next Steps for ADE Cohorts

Phase 1 (Summer, 2021) - materials were created

Phase 2 (Fall 2021) - refining materials across content areas

* **Phase 3** (Spring 2022) - develop supplemental materials to accompany Phase 1 work

What other work is needed for you?



QUESTIONS

You can reach us at...

Anna Backstrom

anna.backstrom@dvusd.org
@DVUSDFineArts

David Simmons

info@ubuproject.org
@ubuprojecthope

Nathan Johnston

njohnstonmusic@gmail.com
@njohnstonmusic

THANK
YOU!!

